



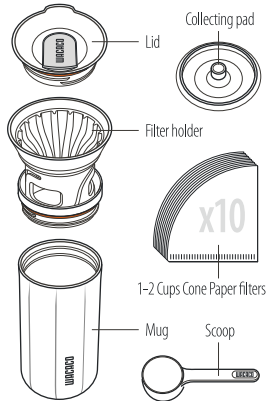
WACACO

EN INSTRUCTION BOOK 2

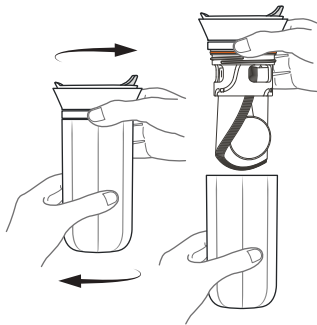
cuppamoka

Thank you for placing your trust in Wacaco products. We hope the Cuppamoka will serve you well for the many years to come. Feel free to send us your feedback and let us know where your great adventures with the Cuppamoka have taken you.

DESCRIPTION



The scoop and the paper filters are stored inside the mug, as showed below.



WARNING

EN

Carefully read the following instructions before using your Cuppamoka brewer. Follow these instructions to avoid the risk of personal injury and damage to the appliance.

- Do not use the Cuppamoka for anything other than its intended use.
- After removing the packaging, make sure that all the Cuppamoka parts are intact.
- The packaging elements (plastic bags, etc.) must not be left within reach of children as they are potential sources of danger.
- Do not allow the Cuppamoka to be used by children or uninstructed persons. Children must be kept under supervision to prevent them from playing with the Cuppamoka.
- Do not overfill.
- Ensure the lid is securely fastened on the mug before carrying any liquid in it. The lid is non-insulated and might get hot. Handle with care.
- Do not put any of the Cuppamoka parts on a gas or electric hot plate, in an oven, a microwave or a dishwasher.
- Do not use any other fluid other than clean water.
- Water must be heated by an external heating source, such as a kettle, and then poured into the Cuppamoka filter holder.
- Clean the Cuppamoka after each use.
- Avoid burning yourself, handle hot water with care.
- If you burn yourself, immediately pour cold water on burnt area and call a doctor if necessary.

INTENDED USE



The Cuppamoka is intended for personal use. It is not suitable for any commercial, professional, collective, or industrial use.

Use of the Cuppamoka in any manner other than as directed herein could cause harm to persons and void the warranty. Wacaco Company Limited will not be responsible for injury or damage resulting from improper use of the Cuppamoka.

SAFETY APPROVAL

The Cuppamoka complies with major safety approvals regarding food contact materials.



ENVIRONMENT PROTECTION

Packaging materials and appliance contain recyclable materials.

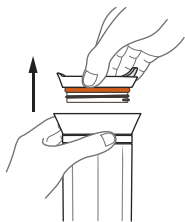


DISPOSAL

The Cuppamoka has been manufactured using high quality materials that can be reused or recycled. Dispose of the appliance in a suitable waste collection center.

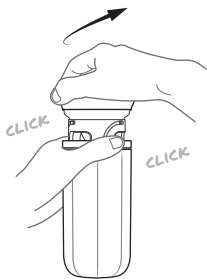
INSTRUCTIONS

EN



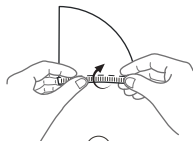
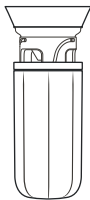
①

Remove the lid and pull out the collecting pad.



②

Unscrew anti-clockwise and pull up the filter holder from its carrying position.



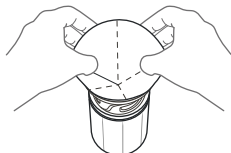
③

Fold the paper filter along the seams.



④

Open the paper filter to flatten the creases.



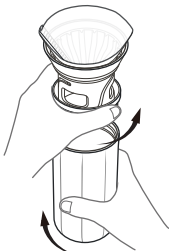
⑤

Place the paper filter inside the filter holder.



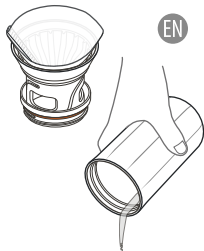
6

Clean the paper filter by pouring hot water over it.



7

Unscrew the filter holder by turning the lower ring.



8

Remove the water from the mug.



9

Screw back the filter holder onto the mug by turning the lower ring.



10

Add 2.5 scoops of ground coffee (20g of medium grind).



11

Tap and shake lightly to level the grind.

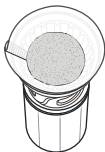
Brewing process (step 12 to 14) should not take more than 3 min.
Need 300 mL (10 fl oz) of hot water (85°C-92°C, 185°F-198°F).

EN



12

Pour slowly in circular pattern 40 mL (1.35 fl oz) of hot water.



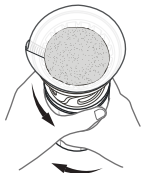
13

Blooming process, wait for about 25 seconds.



14

Slowly add 260 mL (9 fl oz) of water by following the circular pattern.



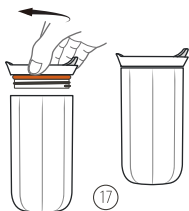
15

Unscrew the filter holder by turning the lower ring.



16

Put the filter holder on the collecting pad.



17

Screw the lid onto the mug.
Enjoy your delicious coffee.

WARRANTY

EN

Wacaco Company Limited warrants the Cuppamoka against defects that are due to faulty materials or workmanship for a period of 24 months from the date of purchase. This warranty is not transferable and does not entitle to compensation in cash. Wacaco Company Limited disclaims all responsibility for incidental or consequential damages caused by use of this appliance.

This warranty does not cover:

- Damage resulting from improper use, abuse, neglect, commercial use or any other use of this appliance not found in this printed manual.
- The replacement of the O-rings, scoop and paper filters.
- Damage of an aesthetic nature, damage due to corrosion or gradual deterioration.

For any exchange, the cost of return is at your expense. If your Cuppamoka fails within two years, please contact your Wacaco local distributor or support@wacaco.com directly for exchange.



Share your experience on social media by using #wacaco.



WACACO

cuppamoka